

# ARKANSAS RAILROADER

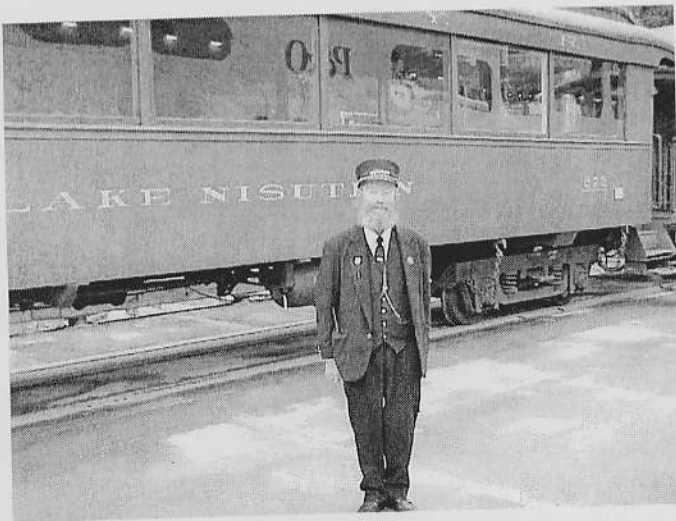
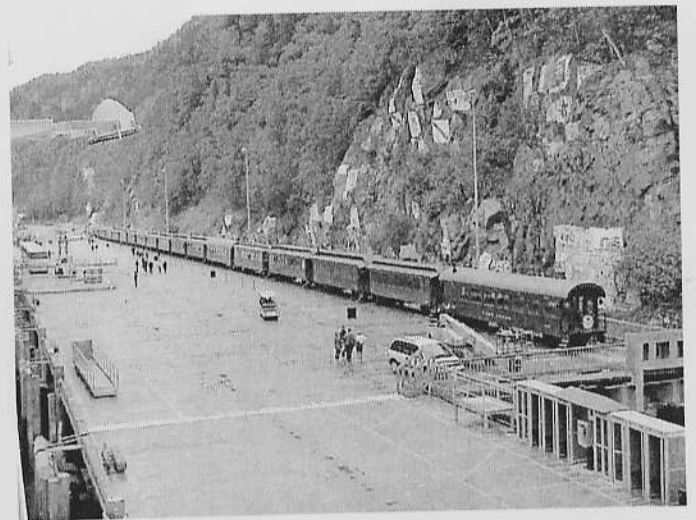


Little Rock Chapter  
NRHS

VOLUME 31 NUMBER 7 JULY 2000



Aboard the White Pass and Yukon Narrow Gauge southbound between Carcross and Skagway, Alaska, June 6, 2000. We were on a Princess Cruise/Tour of Alaska at the time. More pictures inside.



**TOP LEFT** - White Pass and Yukon Railroad station in downtown Skagway, Alaska, June 6, 2000. **TOP RIGHT** - Aboard one of the narrow gauge cars on the train as it was running southbound between Carcross and Skagway. **MIDDLE LEFT** - One of the trains had a steam engine, seen here parked next to the Princess ship *OCEAN PRINCESS* on June 6. **MIDDLE RIGHT** - The White Pass and Yukon train as seen from our stateroom aboard the *Ocean Princess* cruise ship. **LOWER LEFT** - A conductor posing for tourists. **BOTTOM RIGHT** - A closeup of the steam engine. In July, the White Pass and Yukon is planning to have another steam engine brought in to celebrate their 100<sup>th</sup> anniversary with special trips all the way to Whitehorse, Yukon Territory, Canada.

## 2000 OFFICERS/POSITIONS OF THE ARKANSAS RAILROAD CLUB

PRESIDENT - John Hodkin, Jr., 506 Gordon St, N Little Rock AR 72117-4713 (501-945-2128)  
VICE-PRESIDENT - Jim Wakefield, 316 Auburn Dr, Little Rock AR 72205-2769 (501-664-0232)  
TREASURER - Walter B. Walker, 8423 Linda Ln, Little Rock AR 72227-5983 (501-225-0826)  
SECRETARY - Sharon Doyal, HC72 Box 41A, Clinton AR 72031 (501-745-7938)  
EDITOR - Ken Ziegenbein, 1023 Claycut Cir, N Little Rock AR 72116-3728 (501-758-1340)  
NRHS DIRECTOR - David P. Hoge, 3721 Idlewild, N Little Rock AR 72116 (501-771-1025)  
PHOTOGRAPHER - John C. Jones, 117 Cottonwood, Sherwood AR 72120-4011 (501-835-3729)  
TRIP ADVERTISING - David P. Hoge, 3721 Idlewild, N Little Rock AR 72116 (501-771-1025)  
BOARD '00 - Gene Hull, 3507 E Washington #31, North Little Rock AR 72114-6455 (501-945-7386)  
BOARD '01 - Tom Shook, 1716 Alberta Dr. Little Rock AR 72227-3902 (501-225-8955)  
BOARD '02 - Bill Bailey, 8318 Reymere Dr, Little Rock AR 72227-3944 (501-224-6828)  
BOARD '03 - Robin Thomas, 10980 Rivercrest Dr #26, Little Rock AR 72212-1412 (Chairman)  
BOARD '04 - Ron Esserman, 326 Esserman Ln, Dover AR 72837-7754 (501-331-2030)

## NEXT MEETING/PROGRAM

The ARKANSAS RAILROAD CLUB is a non-profit organization of railroad and train enthusiasts (prototype trains, not model trains) that was formed in 1969. We are also the Little Rock Chapter of the National Railway Historical Society. We meet on the second Sundays of most months at 2 p.m.

Dues to join the ARKANSAS RAILROAD CLUB are currently \$20 a year, which includes the monthly 16-24 page Arkansas Railroader newsletter. If you'd like to join the NRHS through our club (thus being a member of the Little Rock Chapter NRHS and national NRHS), you must pay \$17 a year more, bringing the total to \$37 a year for both. Dues are always payable on January 1<sup>st</sup> of each year, but you may pay at any time (membership will extend through the following year).

To join, send your name, address and phone number plus dues to the ARKANSAS RAILROAD CLUB, PO BOX 9151, NORTH LITTLE ROCK AR 72119. Call 501-758-1340 for information. The newsletter editor's email address is:

[ken.z.rw@ix.netcom.com](mailto:ken.z.rw@ix.netcom.com) The Arkansas Railroader is put on the Web monthly, and that address is:  
<http://www.trainweather.com>

The next meeting of the Arkansas Railroad Club will be held Sunday, JULY 9 at at 2 p.m. at Pulaski Heights Presbyterian Church, 4401 Woodlawn Drive in Little Rock. The program will be given by John Jones on the *California Zephyr*. Refreshments will be served.

The August program will be given by Bill Bailey and David Hoge on the tear-town and inspection of Cotton Belt steam locomotive 819.

Member TOM LEWIS of Houston, Texas sent an email concerning the Eureka Springs & North Arkansas Railroad's steam engine #201, a 2-6-0. Apparently, this engine was used in building the Panama Canal. Mr. Lewis also remembers that ES&NA's #1, along with #201, came from W. T. Carter Lumber Company and he can remember seeing a number of these locomotives sitting near the lumber mill at Camden, Texas in the late 1960s.

2001 ARKANSAS RAILROAD CALENDAR - The 2000/2001 calendar from the Arkansas Railroad Club is ready. It contains 18 black & white railroad photos taken in Arkansas over the years. Why 18? Well, I got so many photos I liked, I decided to make it a 16-MONTH CALENDAR by adding September-December 2000 at the beginning, followed by the regular 2001 12-month calendar. That way you can buy it this Summer and it'll be ready to hang up. THE PRICE HAS BEEN REDUCED to \$5 each (plus \$1.50 postage/handling per order).

Railroads/trains included this time will be: Missouri Pacific, Amtrak, Union Pacific, Louisiana & Northwest, Rock Island, Arkansas Midland, Kansas City Southern, Southern Pacific, Cotton Belt 819 then and now, Missouri & Arkansas,

Delta Eagle, Transitan industrial locomotive, DeQueen and Eastern, BNSF, plus some repeats of roadnames, but in a different time period. Contributors include: Bill Bailey, Mike Adams, Gene Hull, John C. Jones, Randy Tardy, John Mills, Robin Thomas, A. B. Simpkins, Thomas M. Binger, William Moneypeny, Gene Bailey, R. S. Plummer, Peter Smykla, Jr., Jonathan Royce, William J. Husa via Russell Tedder, and Tom Shircliff.

There's an order blank enclosed in this newsletter.

## RARE MILEAGE RAILROAD TRIP ON DQ&E

Following is an email sent out nationwide from Bart Jennings regarding the probable running of special trains on the DeQueen & Eastern Railroad September 29, 30 and October 1 this year. The Arkansas Railroad Club will get a portion of the profits from these trips. I printed the entire news release as received. It lists a place to write to, but you may also call John Hodkin, 501-945-2128 if you have any questions.

**Subject: Bart Jennings Productions Presents...A Trip!!!!**

Date: Wed, 14 Jun 2000 20:38:28 -0400

From: Barton Jennings <bjennin1@utk.edu>

To: mileage@sei.cmu.edu

Here is the announcement we have all been waiting for...

The DeQueen & Eastern/Texas, Oklahoma & Eastern will be celebrating their 100th anniversary the weekend of September 30th, 2000. I received permission today to operate 3 days of excursions for the event out of DeQueen, Arkansas. Current plan is on Friday night to run at least two short 1-hour hops. Saturday morning a turn to Valliant and late Saturday afternoon a turn to Perkins. Sunday afternoon a series of short turns. These trains will use the consist from the Hugo Heritage Railroad with seating for about 250.

To make the trips available for locals, D&E will provide volunteer crews and cover many costs when possible.

Midday Saturday, a trip toward Valliant is planned using the KCS executive train (if available) for invited guests only. Also, we are working on a steam locomotive for the weekend. Boy, when they run a weekend, they do it right. The railroad will shut down completely so that nothing goes wrong with train conflicts and so all railroad employees and their families can ride the trains. I will be giving them free tickets so all can ride. There will also be a carnival at the D&E shops complex downtown. Tours of the KCS train are also planned if the train does make the event.

Final price is not set. We are looking at \$10 adults/\$5 children for the short turns. Probably about \$40/\$30 for the half day trips. Seating will be limited obviously. If demand is sufficient, we will run more Friday trips. Sorry, no plans yet for the Western Farmers line near Valliant.

As an alternative, I am also running motorcar trips the same weekend at Oak Ridge which will cover all mileage there, with about 3 not covered by the regular train or the dinner train included. You know where I will be.

For info, please send a SSAE to: **SARM, DeQueen Trip, P.O. Box 32424, Knoxville, TN 37930-2424**. Expect a response in 1 month.

Also, for mileage only, there are several hotels in DeQueen, mostly of the Scottish Inns types. 1 very good hotel in town is the Western Plaza Inn (next to the Western Sizzlin' across from the WalMart). That is where I am at. Phone number is 870/642-6990. Tell them I gave you their number, I want to see if they eventually give me a room. Please note, they only have 42 rooms and I have already booked a number of them for my carhosts. Other good hotels are about 40 miles north at Mena, Arkansas.

Bart Jennings (keeping my fingers crossed that it all works). And yes, this was sent out with the encouragement of the

D&amp;E!!!

**Minutes of the April 9, 2000 Arkansas Railroad Club meeting:**

John Hodkin, President, presiding - Tammy Hodkin, temporary secretary

The meeting was called to order at 2:00 p.m. by President John Hodkin. We had 5 new visitors today. Walter Walker gave the treasurer report. Bill Bailey reported on the 819 and said things are looking good. Gene Hull gave a report on how Naomi Hull is doing. He said she is taking one day at a time. Peter Smykla thanked everyone who came to Pine Bluff's Cotton Belt Rail Historical Society's Show and Sale the previous Saturday. The Board of Directors

had a meeting and voted to buy a stone for \$100.00 with Gene and Naomi Hull's name on it to be presented and placed in a garden at the Central Arkansas Main Library.

Ken Ziegenbein said he had a space on the 3<sup>rd</sup> floor of the Main Library where he has put some railroad objects and models on display, including material on the Arkansas Railroad Club. Walter Walker also reported on the club's show and sale and said we had 25 tables sold at this time. He will need help setting up tables on Friday the day before the show and taking them down Saturday after the show. Jim Wakefield still needs programs from June through December. The May meeting will be on May 21 and the program will be given by Jack Schnedler.

In June our meeting will be on Saturday, June 10<sup>th</sup> at Ron Esserman's small railroad operation near Russellville. Tom Shook reported on Amtrak. Randy Tardy reported on the Postal Train that will be at the River Market on April 20-22. John Jones gave a report on the train in Hot Springs that they were going to keep it running (the White River Railway operation). Peter Smykla reported that April 22 will be the Fordyce on the Cotton Belt Festival. Gene Hull donated his slide collection to the Arkansas Railroad Club.

The program was given by John Jones on his trip to San Francisco last February.

**Minutes of the May 21, 2000 Arkansas Rail Road Club Meeting**

John Hodkin, President presiding - Sharon Doyal, secretary

At 2:00 the meeting was called to order by President, John Hodkin.

It was asked if there were any visitors present. John Mills, a member from Topeka, KS, introduced himself to the club. It was voted to dispense with the reading of the minutes from the last meeting. Walter Walker gave the club's Treasury Report. We did have a decline in revenue, but the club is still solvent. There was no NRHS news.

Bill Bailey gave a report from the Cotton Belt Rail Historical Society. He reported that Cottonbelt Locomotive 819 is completely disassembled. The boiler and the frame looks to be in good shape. The ultra sound and x-ray of the of the locomotive is close at hand. The Cotton Belt Rail Historical Society has received a new caboose from Longview, TX. It is a steel bay caboose, number 83.

Mr. Gene Hull gave a report on how his wife, Naomi Hull is doing. He said there was no apparent change in her condition.

During old business the following items

were discussed:

Show and Sale--As of this date only 30 tables have been sold. This is somewhat a low count at this time, but table sales may pick up. We will have a modular group running a display this year. Members will be needed to help set up Friday, June 2 and to take tickets, etc. Saturday, June 3. Randy Tardy has sent press releases around the state and adds will be out around the state as well.

NRHS Representative--The Board of Directors recommended that club member, David Hoge become our new representative. The president asked for any other nominations. There were none. A motion was made to make Mr. Hoge the NRHS Representative, the motion was seconded and the motion carried.

John Jones reported on the Postal Train that was in Little Rock, AR. He shared several items that were on display and his photographs. He also reported that he had received a letter from the U. S. Postal Service wishing to use several of his photographs for their brochures, etc. He will get photographic credit for anything that they use. He also had a photo on the cover of U. P. Railroad's magazine and reported on several happenings dealing with U. P. R. R. He reported that L. R. & W. R. R. derailed on Cantrell Road in Little Rock. They had apparently spread the rail and put seven cars on the ground.

During New Business the following items were discussed:

Amtrak went daily with the *Texas Eagle*. There will be ceremony in Fort Worth, TX to declare Amtrak's daily service. Randy Tardy reported that the service was great!

John Mills reported about a letter writing campaign to Linda Morgan, Surface Transportation Board. The letter writing campaign has to deal with Directional Running of trains. Mr. Mills explained that this was like not running with C. T. C. Board, sidings, etc. He feels that we need to voice our opinions on this matter.

Jim Wakefield, Vice-President reported that he needed program for July, August, October, November and December. If you can help him out please contact him.

The June meeting will be held at Ron Esserman's Waldon Too R. R. in Dover, AR.

Ken reported that the June newsletter was already printed and mailed.

John Hodkin, being a proud father, reported that his oldest daughter, Brandy would be graduating from North Little Rock High School this year and wanted to thank everyone for their cards and gifts.

There was a motion to adjourn with a second, the motion carried and the meeting was adjourned. We then enjoyed the program by Jack Schnedler on the Hejaz Railway in Saudi Arabia.

## WANTED : FOR SALE OR TRADE

The following is for those who want to find certain railroad-related items, information, or want to sell or trade such items with other railfans. We reserve the right to refuse listings if deemed inappropriate. The Arkansas Railroad Club is not responsible for misleading ads.

**WANTED** - Small lightweight flatcar - standard gauge. Could be cast steel trucks. Contact Ron Esserman, 326 Esserman Ln, Dover AR 72837-7754, 501-331-2030.

**WANTED** - History of wagons and railroads between 1860 and 1900 in the U.S., including drawings of trestles, wooden turntables, old-time buildings, engine sheds and signal towers. I'm building a G-scale layout using this time period. Contact Peter Folen Weimar in Germany, email: [p.john.weimar.de@t-online.de](mailto:p.john.weimar.de@t-online.de)

**WANTED** - Photos of Searcy, Arkansas depots (Rock Island, M&NA, DK&S) Contact Tim Rowland, 2310 Cattail, Searcy AR 72143.

**FOR SALE** - Custom painted O and G Scale figures for on-train-platform and museum dioramas. For a brochure listing the many people figures available, contact Transformations, Inc., 1212 Carlisle St, Natrona Heights PA 15065 or call 724-226-1330.

**WANTED** - Any studies that have examined a train handler's situational awareness in fog. If you know of a publication that addresses this issue, let Pat Barnes of the National Transportation Safety Board know at this email address: [BARNESP@ntsb.gov](mailto:BARNESP@ntsb.gov)

**WANTED** - Walt Babineau of Workforce, Inc, a non-profit group part of Onestop Group in West Memphis, wants to know how to get grants to restore the Missouri Pacific depot at Marianna, Arkansas. He wants to get the history of the depot, learn how to raise funds, and general contacts that can help him and his group save this depot. If you can help, call him at 870-735-6730 (day) or 870-739-4768 (night) or email him at [watl@development.org](mailto:watl@development.org)

**WANTED** - Your slides, photos, mementos, old timetables, etc. of railroad history. If you find anything, even an old Sears catalog from the 1950s-1970s that had toy trains, write to us at PO Box 9151, North Little Rock AR 72119 or call 501-758-1340 or email at [ken@trainweather.com](mailto:ken@trainweather.com).

**FOR SALE** - The Arkansas Railroad Club's reprint of Gene Hull's classic *Shortline Railroads of Arkansas*, over 400 pages, hardbound, foil stamped, limited run, 6"x9" book. You can order from White River Productions, Inc., 24632 Anchor Ave,

Bucklin MO 64631 or call 877-787-2467. Cost is \$24.95 plus \$5 shipping (or you can pick one up at a club meeting and save the postage).

**FOR SALE** - The Arkansas Railroad Club's hardbound, 120-page book called *Railroad Stations and Trains through Arkansas and the Southwest*. It was written by Clifton Hull with help from Tom Shook, among other club members. Kevin EuDaly of White River Productions did the graphic design and artwork. You can order from White River Productions, 24632 Anchor Ave, Bucklin MO 64631. Cost is \$29.95 plus \$4.50 postage and handling (total of \$34.45 if you're having it mailed). MasterCard or Visa accepted. You can call White River Productions at 877-787-2467.

**FOR SALE** - James R. Fair's book *The Louisiana & Arkansas Railway*. This 176-page clothbound book has 80 black and white illustrations and covers the Louisiana & Arkansas Railway from its beginning to the modern era. You can now order directly from Mr. Fair. He'll even autograph it for you. Cost directly from him is only \$34. His address is: James R. Fair, 2804 Northwood Rd, Austin, TX 78703-1630. Call 512-451-6194 or 512-471-3689.

## RAILROAD ABANDONMENT PROPOSALS

The address of the Surface Transportation Board is: Office of the Secretary, Case Control Unit, 1925 K Street, Washington DC 20423. The STB phone number for abandonment procedures (Office of Public Services) is: 202-565-1592. If you contact them, it would be handy to use the Docket Numbers. Their Web address is: <http://www.stb.dot.gov> if you'd like the complete listings.

These abandonment proposals have been printed in the Federal Register or have come directly from the Surface Transportation Board. They will go in effect unless one of the following occurs: 1) an offer of financial assistance is received; 2) a request for public use of the land is received (for instance, rails-to-trails); 3) petitions to reopen the case is filed. Railroads, before they can file these "notices of exemption under CFR 1152 Subpart F," must certify that 1) no local traffic has moved over the line for at least 2 years; 2) any overhead traffic can be routed over other lines; 3) no formal

complaint filed by a user is pending and; 4) environmental reports, historic reports, transmittal letter, newspaper publication, and notice to governmental agencies have been met. Even though approval is granted for the railroads to abandon, it may be months or years before track is actually taken up.

**MINNESOTA - BNSF** - To abandon 4.89 miles of line between m.p. 81.11 near St. Joseph and m.p. 86.00 near Collegeville, Minnesota. Effective June 13, 2000. (STB Docket No. AB-6, Sub No. 387X, decided May 4, served May 12, 2000)

**MASSACHUSETTS - BOSTON & MAINE** - To abandon the Bemis Branch from m.p. 8.83 to m.p. 10.94, 2.11 miles, in Waltham and Watertown, MA. Written comments due by June 12. (STB Docket No. AB-32, Sub No. 89, decided May 15, served May 18, 2000)

**SOUTH DAKOTA - SOO LINE** - To abandon the Veblen Line from m.p. 208.8 near Rosholt to m.p. 228.2 west of Claire City, South Dakota, the end of the line, a total of 19.4 miles. Includes the stations of Victor, New Effington, Hammer, Claire City, Veblen. Comments due by June 12. (STB Docket No. AB-57, Sub No. 51, decided May 10, served May 18, 2000)

**IOWA - UNION PACIFIC** - To abandon the Oskaloosa Subdivision from m.p. 312.1 near Eddyville and m.p. 322.9 near Maxon, a distance of 10.8 miles. Includes the town of Bridgeport and Maxon, Iowa. Final decision by September 1, 2000. (STB Docket No. AB-33, Sub No. 153X, decided May 25, served June 2, 2000)

**INDIANA - CSX** - To abandon the Richmond Subdivision from m.p. CI-61.90 to m.p. CI-63.21 at the end of the line, a total of 1.31 miles in Richmond, Indiana. Final decision by September 8, 2000. (STB Docket No. AB-55, Sub No. 577X, decided June 7, served June 13, 2000)

## ARKANSAS RAIL NEWS

## GENERAL RAIL NEWS

### LARGE UNION PACIFIC ORDER

General Motors EMD Division has shipped the first five locomotives of a 1,000 unit order for the Union Pacific Railroad. These first units are numbered 4000 to 4004. The 1,000 engines being leased to UP is the largest order ever placed with Electro-Motive and the largest order in Union Pacific history. The model SD70M locomotives will replace up to 1,500 of UP's older engines. These new engines have 4,000 horsepower and six-axles.

## AMTRAK NEWS

### DAILY SERVICE

Amtrak's *Texas Eagle* began daily service Sunday, May 21 between Chicago and San Antonio with service to Los Angeles. Senator Kay Bailey Hutchison rode the first trip out of San Antonio to a celebration in Fort Worth. Ridership could increase up to 50 percent with the daily service. (*Dallas Morning News*, May 22, via Dan Barr)

## EXCURSIONS/SHOWS/EVENTS OF OTHER CLUBS

**DURANGO, COLORADO** - August 24-26, 2000 - The Colorado Railroad Museum has agreed to run their Goose #2 along with Goose #5 at this year's Durango & Silverton Railfest. Trackwork began in Doloras to lay

track through the Town Hall parking lot so Goose #5 can run trips on this short track beginning in July. Information from the Colorado Midland Rails, Chapter NRHS via the Gateway Railletter.

**FORT WORTH, TEXAS** - September 20-24, 2000 - Joint Texas Burlington-Rock Island Convention - Will include many slide shows featuring Rock Island and Burlington Zephyr subjects, field trips to BNSF, BNSF

Executive train excursion round-trip Fort Worth-Dallas-Teague, Texas Zephyr train show. For registration information contact Steve Goen, Joint Texas Convention 2000, 1519 Sweetbriar Dr, Wichita Falls TX 76302-2911, 940-767-4843, or email at [charleswoodward@hotmail.com](mailto:charleswoodward@hotmail.com)

**JACKSONVILLE, ARKANSAS** - November 4, 2000 - Second annual Arkansas Valley Model Railroad Club's Train Show, Jacksonville Community Center, Jacksonville, Arkansas, 10 a.m. to 5 p.m. Admission is \$3, kids 12 and under free. For table reservations, contact Jerry Fussell, 412 W 51<sup>st</sup> St, North Little Rock AR 72118, 501-758-2590.

**HOT SPRINGS, ARKANSAS** - The Hot Springs White River Scenic Railroad is running excursions out of Hot Springs on

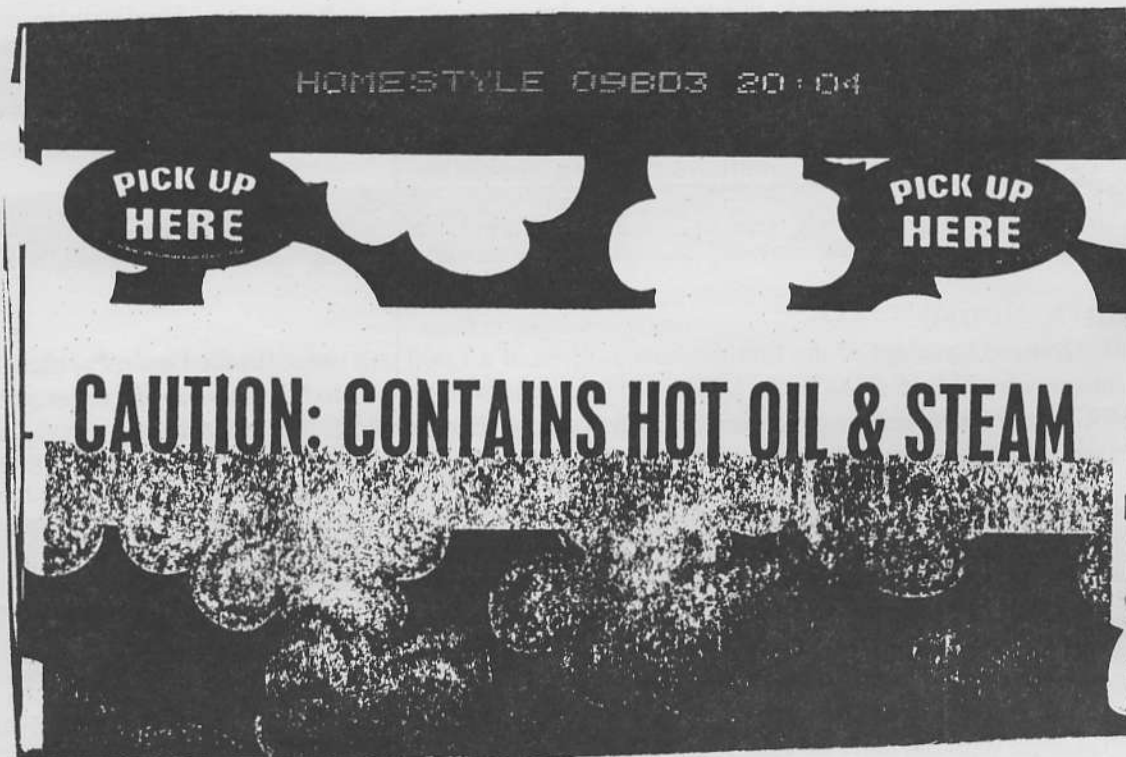
Wednesdays, Fridays, Saturdays and Sundays through the winter. They leave from the Hot Springs Transportation Center. Prices are \$19.95 for first class, \$11.95 coach and \$6.75 for children. Call 888-824-1022 for tickets.

**WORLDWIDE** - Trains Unlimited Tours is again offering rail journeys worldwide (Russia - including a last Trans-Siberian all-steam trip for \$16,000, Africa, Mexico, South America, U.S., Canada, Peru, Alaska, Argentina, Copper Canyon. For a brochure and more information call 800-359-4870 or write Trains Unlimited Tours, PO Box 1997, Portola CA 96122.

**EAST ELY, NEVADA** - Nevada Northern Railway Museum will operate many steam and diesel excursions in 2000 starting May 13 and running through

September 16. Call them at 775-289-2085.

**ARKANSAS TOURIST LINES** - **(FLIPPIN, ARKANSAS)** - White River Scenic Railroad will run Flippin-Calico Rock from April 1 to November 30. A dinner train will also be run. Call 870-435-6000. **(SPRINGDALE-VAN BUREN)** - The Arkansas & Missouri Railroad will run between Springdale and Van Buren and Van Buren to Winslow. Call 800-687-8600. **(EUREKA SPRINGS)** - The Eureka Springs & North Arkansas will run a steam excursion out of Eureka Springs April 1 through October 30 over the former Missouri & North Arkansas right of way. Lunch trains also available. Call 501-253-9623. *(From February 17, 2000 Arkansas Democrat-Gazette)*



*This was taken off a package of microwave popcorn - the description perfectly fits a steam engine, don't you think?*



MISSOURI PACIFIC LINES - A CORPORATE HISTORY - Part 12 (Gene Hull)

Purchased Lines

By deed dated September 19, 1887, the railroad, property and franchises of The Pacific Railway Company in Kansas were purchased by the Pacific Railway Company in Nebraska. These proceedings were had under authority of acts of the legislatures of Kansas and Nebraska, approved March 4, 1887, and March 14, 1887, respectively (Session Laws Kan. 1887 p. 279, and Session Laws Neb. 1887 p. 536). Evidence of sale and submission by these corporations, severally to the laws of Kansas and Nebraska, was filed in the offices of the Secretaries of State of Kansas and Nebraska, respectively, September 19, 1887. Both companies were organized and owned by The Missouri Pacific Railway Company.

The Pacific Railway Company in Kansas built the line from Warwick to the State Line, which was completed in the late summer of 1887, but not opened for operation until October 31, 1887, after its acquisition by the Pacific Railway Company in Nebraska.

Termini: From western corporate limits of Warwick, Kansas (joining the rails of The Atchison, Republican Valley and Pacific Railway Company - ~~See page 371~~, to the Kansas-Nebraska state line, 1.74 miles.  
~~Refer on accompanying map - Green, No. 94.~~

The Pacific Railway Company in Nebraska constructed the road from the State Line to Prosser, completing same to Superior, October 31, 1887, 6.74 miles, and to Prosser, April 22, 1888, 64.52 miles; a total mileage of 71.26, which, with the mileage purchased from The Pacific Railway Company in Kansas, made the total mileage owned by this line ..... 73.00

Termini: From a junction with the rails of The Pacific Railway Company in Kansas at Kansas-Nebraska state line to end of track at Prosser, Nebraska.  
~~Refer on accompanying map - Brown, No. 25.~~

The property and franchises of the company were purchased by The Missouri Pacific Railway Company by deed dated January 18, 1910, and the organization of the Pacific Railway Company in Nebraska was no longer maintained and ceased to exist.

8. The Pueblo and State Line Railroad Company:

This company was incorporated under the general railroad laws of Colorado by articles of association filed in the office of the Secretary of State of Colorado, April 30, 1887, and amendment to charter filed August 17, 1887. Its line of road, from Kansas-Colorado state line to Pueblo, was completed December 2, 1887. Mileage ..... 152.12

Termini: From Kansas-Colorado state line (joining the rails of the D.M. & A. Ry. - ~~See K.S. 5, page 181~~ to south line of "B" Street in Pueblo (joining the rails of the Pueblo Union Depot Company).  
~~Refer on accompanying map - Green, No. 31.~~



Arkansas Railroad Club  
 Little Rock Chapter - NRHS  
 PO Box 9151  
 North Little Rock AR 72119



# ARKANSAS RAILROAD 16 MO. CALENDAR 2001

The Arkansas Railroad Club's 2001 calendar consists of 18 B&W photos of trains in Arkansas over the years - from modern locomotives to past steam. There's one photo for each month from September 2000 through December 2001, plus a front and back photo.

Railroads included are: Ashley, Drew & Northern, Kansas City Southern, Missouri Pacific, Louisiana & North West, Union Pacific, Rock Island, Arkansas Midland, Cotton Belt #819, MoPac's *Delta Eagle*, DeQueen & Eastern, Southern Pacific, Transitan Corp., Missouri & North Arkansas, Amtrak's *Texas Eagle* in the snow, and BNSF. Plus, there's a railroad map of Arkansas in the back of the calendar.

Our calendar (format and sample picture shown at left) will make a great and unique Christmas or special occasion gift. Also, this year it starts in September 2000 and goes through December 2001, giving you 4 extra photos (18 total). The price has also been reduced to \$5 (\$4.50 for 10 or more), plus \$1.50 postage/handling each order.

Sunday	Monday	Tuesday	Wednesday	Thursday	Friday	Saturday
<b>March 2001</b>						
				1	2	3
4	5	6	7	8	9	10
11	12	13	14	15	16	17
18	19	20	21	22	23	24
25	26	27	28	29	30	31

Make checks payable to: Arkansas Railroad Club

MAIL TO: Arkansas Railroad Club  
 PO Box 9151  
 North Little Rock AR 72119

Please send me:

\_\_\_ Calendars @ \$5.00 each .....  
 \_\_\_ Calendars (10 or more) @ \$4.50 each ...  
 \_\_\_ Postage = \$1.50 per order..... **\$1.50**

TOTAL ENCLOSED .....

NAME \_\_\_\_\_

ADDRESS \_\_\_\_\_

CITY \_\_\_\_\_ STATE \_\_\_\_\_ ZIP \_\_\_\_\_

E-MAIL ADDRESS \_\_\_\_\_

PHONE NUMBER \_\_\_\_\_

Email us at: [railroadcalendar@trainweather.com](mailto:railroadcalendar@trainweather.com) and check our Web site out at: <http://www.trainweather.com>

## REMEMBERING

by: P. B. Wooldridge, former freight agent for the Cotton Belt

In earlier years the Cotton Belt invested heavily in, and depended upon, feeder or branch lines for much of its' revenue. Then, as control switched more and more to the Southern Pacific, 120 main line trains became the focus, and the branch lines more or less faded into memory.

One thinks of the thousands of jobs that were lost as a result. Beginning in 1948 I was progressively the local freight agent at Gideon, Missouri, Trumann, Arkansas, Caruthersville, Missouri, and DeWitt, Arkansas, for a total of 25 years. Little has been written about the poor local freight agent, especially on branch lines.

For one thing, the agent had to please the railroad company, the general public, and the ICC, with all its' over-regulation, which was impossible. I violated every rule in the book, and expected to get fired at any time.

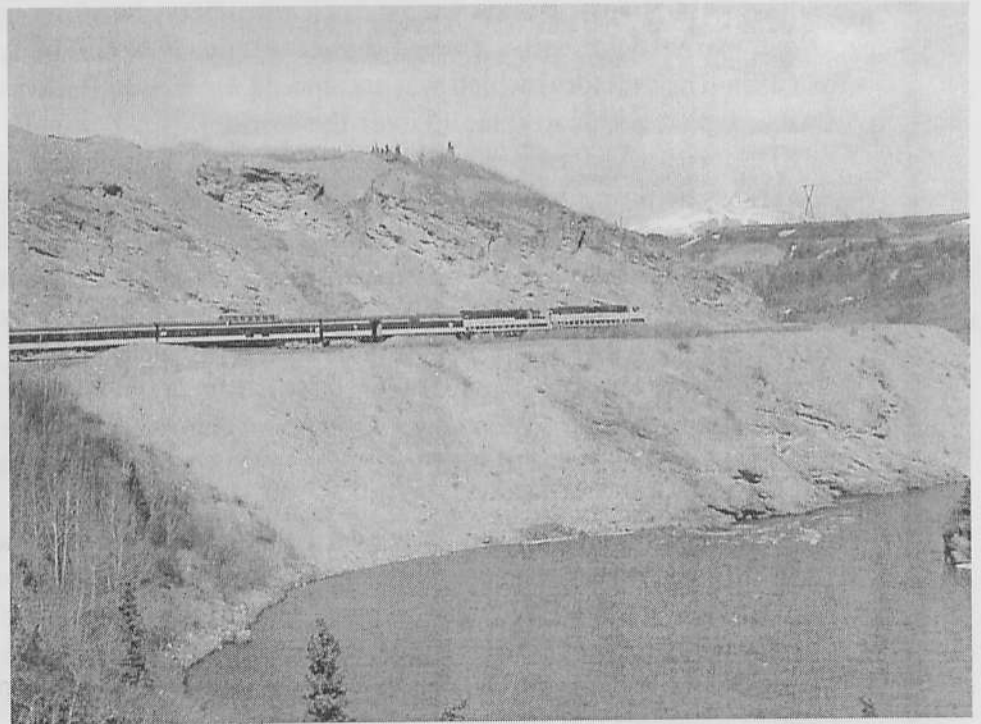
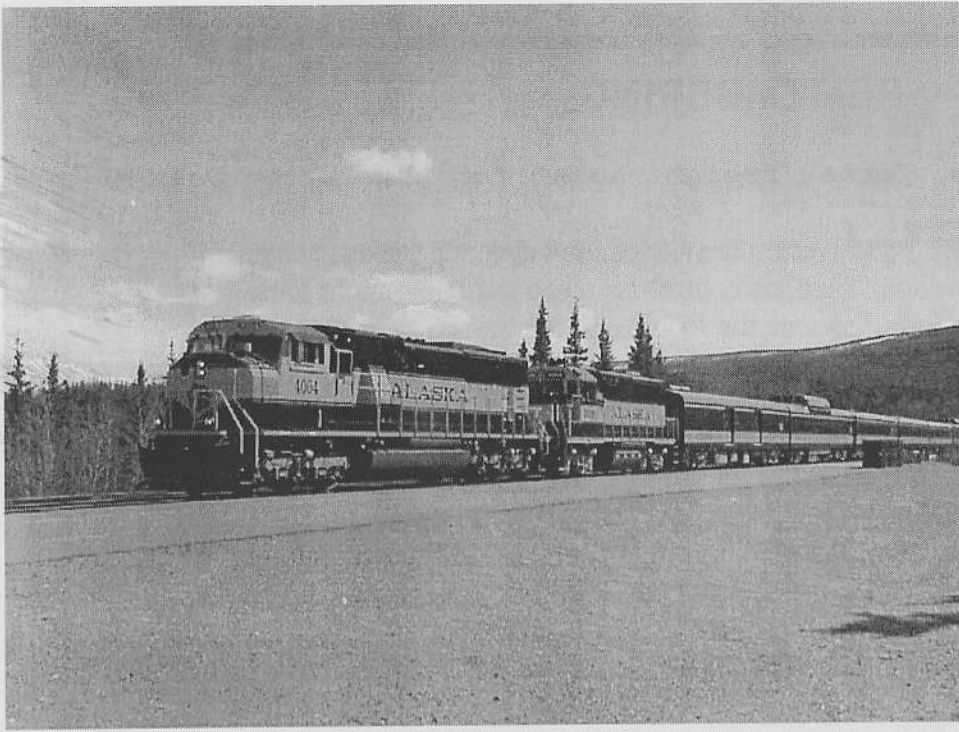
We were very isolated at Caruthersville, Missouri, which was at the end of a branch, off the Trumann branch. In addition to the Cotton Belt business, I also handled business for Southwestern Transportation Co., a truck subsidiary, handling up to 3 trailerloads of less-than-carload merchandise daily. Two of those trailerloads would be knocked-down boat kits out of the Chris-Craft factory, which was located on the Frisco Railroad. Those boat kits went to Alaska, Japan, Saudi Arabia, all over the world.

In a effort to improve our carload business, I contacted Mr. William Harris, who was shipping agricultural limestone throughout that area, all routed Frisco. Mr. Harris then routed hundreds of cars of limestone via Cotton Belt. And I nearly got fired.

ICC regulations were that freight charges must be collected on a 24 hour basis, or on a 48 hour basis for special clients. Mr. Harris appeared in my office one night, owing \$2,000 and offered me a check in payment. I had been instructed by the Treasury Department not to accept any more checks, as one had bounced. Mr. Harris produced a letter from the Department of Agriculture stating the government owed Mr. Harris \$6,000 but payment was being delayed due to government red tape. This limestone program was a government project to assist farmers.

I accepted the check with mixed feelings, thinking I had no alternative. A few days later I received a long distance phone call from Mr. H. F. Becker, Treasurer, informing me that I was being terminated. The moment he said that, I slammed the receiver down. Mr. J. F. Link, traveling auditor and a wonderful person, appeared later, and tole me I had done the proper thing, that a check was far better than nothing. He also added: "I could never be an Agent. I wouldn't last one day." 🚂





These photos were taken May 29, 2000 on our trip aboard the Alaska Railroad between Denali and Fairbanks, Alaska as part of a Princess Cruise/Tour of Alaska. It was very scenic and curvy. The front of the train consisted of the regular Alaska Railroad's blue and yellow cars (6 cars), followed by 6 ex-Santa Fe 6-axle dome cars of Holland/America/Westours, then 6 Princess "Midnight Sun" railcars. All the tourist cars were hauled under contract by the Alaska Railroad, and it was said they made a healthy profit because of it. It was 42 degrees at Denali. *(Ken Ziegenbein photos)*