

ARKANSAS RAILROADER

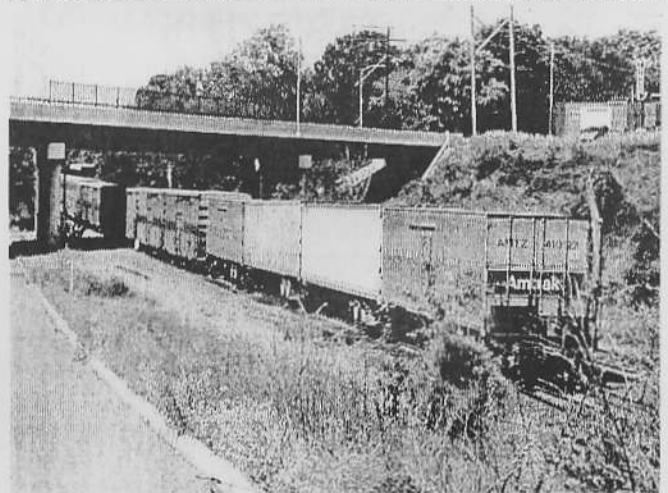
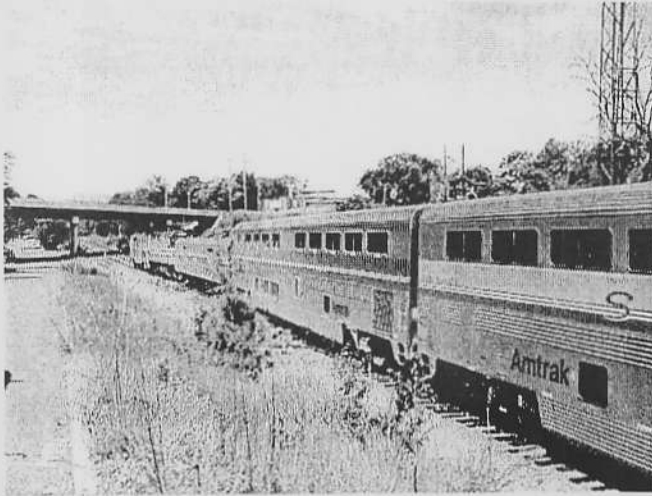
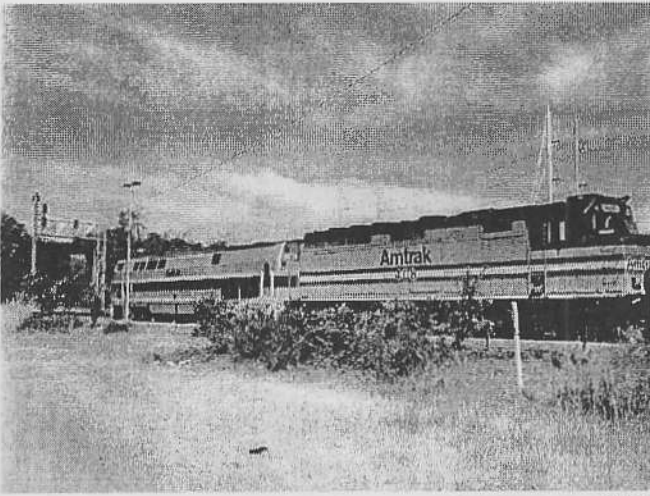


Little Rock Chapter
NRHS

VOLUME 31 NUMBER 9 SEPTEMBER 2000



Southern Pacific 7806, SSW 7794 westbound First 723 at Clarendon, Arkansas,
September 14, 1980. (Peter Smykla, Jr photo)



TOP 4 PHOTOS show Amtrak's daily *Texas Eagle* leaving Union Station in Little Rock, 4 hours late at 11 a.m. July 25, 2000. Notice the RoadRailers at the end of the train. **BOTTOM 3 PHOTOS** show old North Little Rock streetcar tracks on the Main Street bridge (over UP's tracks) that were uncovered during repaving work, July 25. Views are looking south toward Little Rock (*Ken Ziegenbein photos*)

2000 OFFICERS/POSITIONS OF THE ARKANSAS RAILROAD CLUB

PRESIDENT - John Hodkin, Jr., 506 Gordon St, N Little Rock AR 72117-4713 (501-945-2128)
VICE-PRESIDENT - Jim Wakefield, 316 Auburn Dr, Little Rock AR 72205-2769 (501-664-0232)
TREASURER - Walter B. Walker, 8423 Linda Ln, Little Rock AR 72227-5983 (501-225-0826)
SECRETARY - Sharon Doyal, HC72 Box 41A, Clinton AR 72031 (501-745-7938)
EDITOR - Ken Ziegenbein, 1023 Claycut Cir, N Little Rock AR 72116-3728 (501-758-1340)
NRHS DIRECTOR - David P. Hoge, 3721 Idlewild, N Little Rock AR 72116 (501-771-1025)
PHOTOGRAPHER - John C. Jones, 117 Cottonwood, Sherwood AR 72120-4011 (501-835-3729)
TRIP ADVERTISING - David P. Hoge, 3721 Idlewild, N Little Rock AR 72116 (501-771-1025)
BOARD '00 - Gene Hull, 3507 E Washington #31, North Little Rock AR 72114-6455 (501-945-7386)
BOARD '01 - Tom Shook, 1716 Alberta Dr. Little Rock AR 72227-3902 (501-225-8955)
BOARD '02 - Bill Bailey, 8318 Reymere Dr, Little Rock AR 72227-3944 (501-224-6828)
BOARD '03 - Robin Thomas, 10980 Rivercrest Dr #26, Little Rock AR 72212-1412 (Chairman)
BOARD '04 - Ron Esserman, 326 Esserman Ln, Dover AR 72837-7754 (501-331-2030)

NEXT MEETING/PROGRAM

The ARKANSAS RAILROAD CLUB is a non-profit organization of railroad and train enthusiasts (prototype trains, not model trains) that was formed in 1969. We are also the Little Rock Chapter of the National Railway Historical Society. We meet on the second Sundays of most months at 2 p.m.

Dues to join the ARKANSAS RAILROAD CLUB are currently \$20 a year, which includes the monthly 16-24 page Arkansas Railroader newsletter. If you'd like to join the NRHS through our club (thus being a member of the Little Rock Chapter NRHS and national NRHS), you must pay \$17 a year more, bringing the total to \$37 a year for both. Dues are always payable on January 1st of each year, but you may pay at any time (membership will extend through the following year).

To join, send your name, address and phone number plus dues to the ARKANSAS RAILROAD CLUB, PO BOX 9151, NORTH LITTLE ROCK AR 72119. Call 501-758-1340 for information. The newsletter editor's email address is:

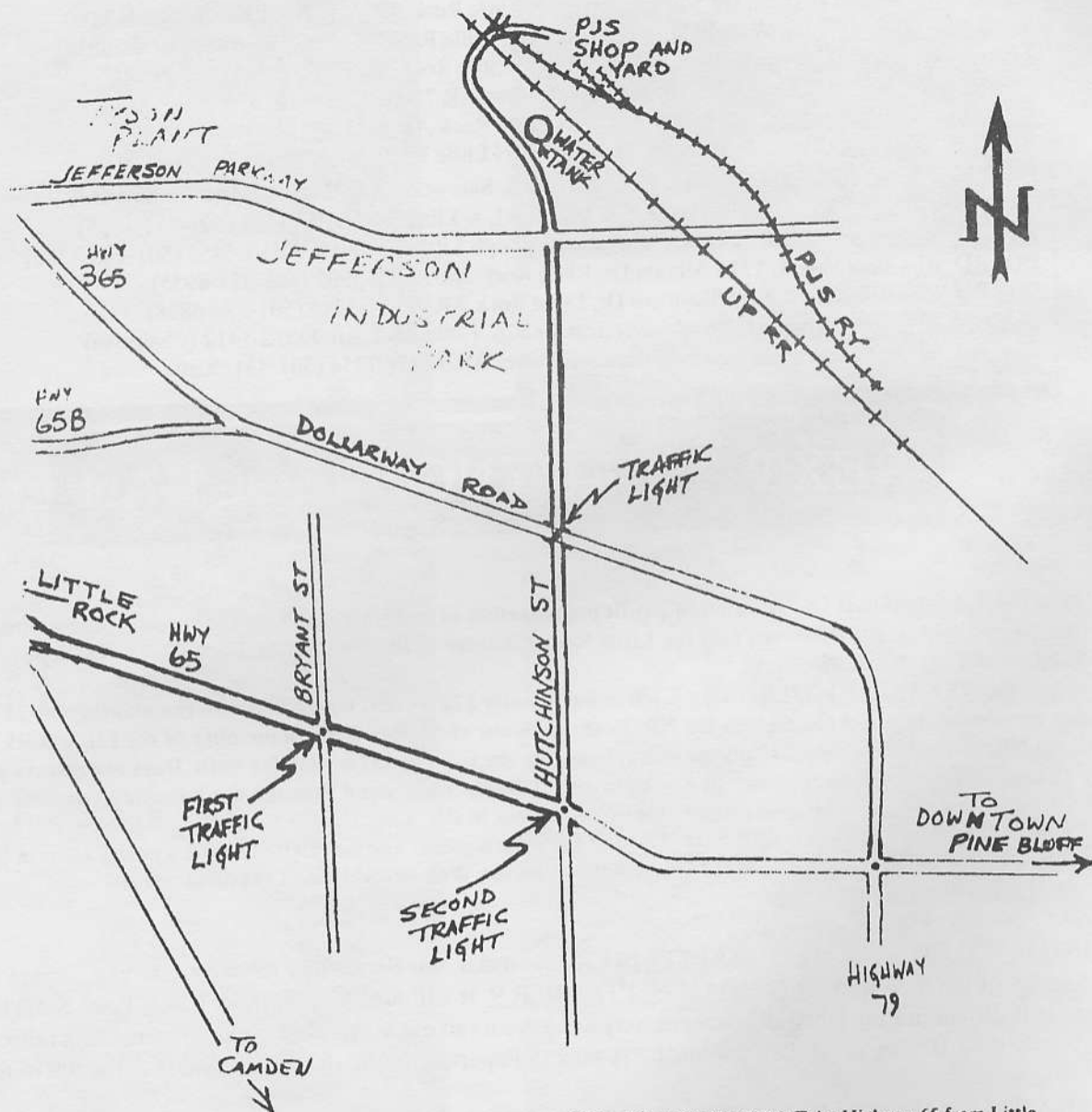
ken.z.rw@ix.netcom.com The Arkansas Railroader is put on the Web monthly, and that address is:
<http://www.trainweather.com>

MEETING DATE CHANGED FOR SEPTEMBER - As usual, our September meeting date will change from the usual second Sunday of the month to **SATURDAY, SEPTEMBER 9**. It will also be at another place, Peter Smykla's Paperton Southern Jct Railroad in Pine Bluff. We may or may not have a rail excursion, but we'll do something railway, like view slides. Time will be 10 a.m. or so. Bring a lunch. A map to Paperton Southern Jct Railroad is at the top of the next page.

2001 ARKANSAS RAILROAD CALENDAR - The 2000/2001 calendar from the Arkansas Railroad Club is ready. It contains **18** black & white railroad photos taken in Arkansas over the years. This is a **16-MONTH CALENDAR** starting in September 2000, ending December 2001. THE PRICE HAS BEEN REDUCED to \$5 each (plus \$1.50 postage/handling per order).

Railroads/trains included this time will be: Missouri Pacific, Amtrak, Union Pacific, Louisiana & Northwest, Rock Island, Arkansas Midland, Kansas City Southern, Southern Pacific, Cotton Belt 819 then and now, Missouri & Arkansas, Delta Eagle, Transitan industrial locomotive, DeQueen and Eastern, BNSF, plus some repeats of roadnames, but in a different time period. Contributors include: Bill Bailey, Mike Adams, Gene Hull, John C. Jones, Randy Tardy, John Mills, Robin Thomas, A. B. Simpkins, Thomas M. Binger, William Moneypeny, Gene Bailey, R. S. Plummer, Peter Smykla, Jr., Jonathan Royce, William J. Husa via Russell Tedder, and Tom Shircliff.

Send any calendar orders to the Arkansas Railroad Club, PO Box 9151, North Little Rock AR 72119.



INSTRUCTIONS TO PETER SMYKLA'S PAPERTON JUNCTION SOUTHERN: Take Highway 65 from Little Rock to Pine Bluff. Second traffic light is Hutchinson Street. Turn left and follow Hutchinson north through the Jefferson Industrial Park, past water tower and across the UP track. Turn right 100 feet past UP track as you cross Paperton Junction Southern track, shop and yard on right.

LAST CALENDAR - Due to stagnant sales over the past few years and only a small profit, the 2001 Arkansas Railroad Club calendar will be the last one produced, at least by yours truly, Ken Ziegenbein. It has taken too much time to put together and is very hard to promote or advertise without busting our budget. Also, I've noticed that most other NRHS groups have stopped making calendars due to slow sales and the abundance of professionally produced color railroad calendars. So...unless someone comes forward to make one for 2002 and gets the Board of Directors to approve, this will be the final one. I will probably make a single page calendar for 2002 and include it in the December 2001 mailing of the newsletters.

GERAL D. MELTON, 1785 COUNTY RD 903, JONESBORO AR 72402-0763, has already paid his 2001 dues and sent in a little personal history. Mr. Melton worked for the Cotton Belt for 35 years, part of this time on the night shift at McNeil, Arkansas as a freight agent from February 1948 to May 1955. He also had contact with the Louisiana and North West Railroad in the days of steam. He was born October 3, 1921. He has been married for 58 years, since June 19, 1942. They were married at Black Oak, Arkansas. He just knew her 8 days before they got married.

NO SHOW AND SALE FOR 2001 - Due to sparse attendance despite good advertising, there will be on Arkansas Railroad Club Show and Sale next year. If you'd like to be in charge of the one for 2002, contact a board member.

CARHOSTS NEEDED for our participation in the DQ&E rail excursions September 29 & 30 and October 1. Contact John Hodkin if you are interested, 501-945-2128.

Below is an application blank if you'd like to ride on this rare mileage trip. Hotel space in DeQueen is limited.

TRAIN SCHEDULES FOR THE DQ&E 100-YEAR CELEBRATION EXCURSIONS

Fri., Sept. 29 4pm, 6pm

90 minute roundtrips to nearby communities such as West Line or Lockesburg. Each trip's destination will depend upon traffic conditions.

Sat., Sept. 30 7am

Roundtrip to Valliant, Oklahoma. This trip will last approximately 3.5 hours and cover the west end of the railroad.

Sat., Sept. 30 3pm

Roundtrip to Perkins, Arkansas, the east end of the line. Trip is expected to last 4 hours.

Sun., Oct. 1 12, 2pm, 4pm, 6pm

90 minute roundtrips to nearby communities such as West Line or Lockesburg. Each trip's destination will depend upon traffic conditions.

All trips depart from near the offices of the DeQueen & Eastern at 412 E. Lockesburg Avenue in downtown DeQueen, Arkansas. Trips run rain or shine. No refunds made less than 10 days before trips. Lost tickets are not refundable. Neither the sponsors nor operating railroads can guarantee schedules.

All trips will use coaches supplied by the Hugo Heritage Railroad from nearby Hugo, Oklahoma. Locomotives and crews will be provided by the DeQueen & Eastern and its employees. The sponsors wish to thank these fine organizations and people for their assistance in running these unique trips. We hope you do too.

ORDER FORM

Please mark your preferred time and date. Please note that seating on each trip is limited. Because of the expected demand, some trips may sell out early. Please include an alternative time and date so that we can attempt to ensure that you may participate in this historic and special event.

Groups, families, or individuals wishing to ride together should order their tickets together. All passengers will be assigned a specific car for their trip and groups will have seating reserved for them.

Please include a stamped envelope with all orders.

Name _____

Address _____

Phone _____

90 minute trips

Adults _____ @ \$15 = _____
 Children(under 12) _____ @ \$10 = _____
 Total = _____
 1st choice: Day: _____ Time: _____
 2nd choice: Day: _____ Time: _____

Valliant Trip

Adults _____ @ \$50 = _____
 Children(under 12) _____ @ \$40 = _____
 Total = _____

Perkins Trip

Adults _____ @ \$50 = _____
 Children(under 12) _____ @ \$40 = _____
 Total = _____

Your order form is above. Please include your name, address, and phone number along with the number and type of tickets desired.

Please include payment with your order. Sorry, we do not accept credit cards but do accept checks or money orders.

Send your orders to:

**SARM/D&E TRIP
 P.O. BOX 32424
 KNOXVILLE, TN 37930-2424**

Please include a self-addressed, stamped envelope with your order. Your tickets will be mailed several weeks before the trip. Any ticket orders received after September 15, 2000, will have the tickets available at the train beginning on Friday of the event. Please check early for your tickets. Any tickets not presold will be available the day of the train trips.

Please do not contact the railroad for information or tickets. Tickets are only available through the trip sponsors or their local representatives. Information can be obtained by writing to the above address or by contacting the Arkansas Railroad Club, PO Box 9151, North Little Rock AR 72119, John Hodkin 501-945-2128 after 6 p.m. Remember, the sponsors are all volunteers and may not be available at all times.

CHRISTMAS PARTY will be held December 16, the same place as last year, namely the University Park Adult Leisure Center, 6401 West 12th Street, Little Rock. Cost to be announced. It will begin at 6 p.m.

CORRECTION FOR JULY MINUTES - The following paragraph should have read as follows: CALM RR and the Arkansas Midland RR news: These two railroads have been trying to get control of the Norman Branch. The Arkansas Midland (not the A & M) took them to court and the court told them they would have to sell at scrap value. The CALM was able to meet the price.

LOWELL E. SALE

Birthdate: Unknown Died: Spring 2000

Mr Sale's wife wrote and said he had a stroke five years ago and had been bedridden ever since. She had always kept paying his club dues over the years for him. Her address: 17517 Elvin Rd, Little Rock AR 72210-3315.

WANTED : FOR SALE OR TRADE

The following is for those who want to find certain railroad-related items, information, or want to sell or trade such items with other railfans. We reserve the right to refuse listings if deemed inappropriate. The Arkansas Railroad Club is not responsible for misleading ads.

WANTED - In 1936, the Rexall Train, sponsored by the St. Louis based Rexall Drug Company, toured 47 states in eight months. The train stopped in Little Rock twice, once sometime between March and June on its way west, and then again in the fall on its way from Oklahoma City to Florida and termination in Atlanta on November 19. Photos and newspaper clippings of the Little Rock visits would be much appreciated and payment made. Send information to: TRRA Historical Society, PO Box 1688, St. Louis MO 63188-1688, 314-535-3101 (evenings). Email Larry Thomas, thomas1@abcbs.com

WANTED - Small lightweight flatcar - standard gauge. Could be cast steel trucks.

Contact Ron Esserman, 326 Esserman Ln, Dover AR 72837-7754, 501-331-2030.

WANTED - History of wagons and railroads between 1860 and 1900 in the U.S., including drawings of trestles, wooden turntables, old-time buildings, engine sheds and signal towers. I'm building a G-scale layout using this time period. Contact Peter Folen Weimar in Germany, email: p.john.weimar.de@t-online.de

FOR SALE - The Arkansas Railroad Club's reprint of Gene Hull's classic *Shortline Railroads of Arkansas*, over 400 pages, hardbound, foil stamped, limited run, 6"x9" book. You can order from White River Productions, Inc., 24632 Anchor Ave, Bucklin MO 64631 or call 877-787-2467. Cost is \$24.95 plus \$5 shipping (or you can pick one up at a club meeting and save the postage).

FOR SALE - The Arkansas Railroad Club's hardbound, 120-page book called *Railroad*

Stations and Trains through Arkansas and the Southwest. It was written by Clifton Hull with help from Tom Shook, among other club members. Kevin EuDaly of White River Productions did the graphic design and artwork. You can order from White River Productions, 24632 Anchor Ave, Bucklin MO 64631. Cost is \$29.95 plus \$4.50 postage and handling (total of \$34.45 if you're having it mailed). MasterCard or Visa accepted. You can call White River Productions at 877-787-2467.

FOR SALE - James R. Fair's book *The Louisiana & Arkansas Railway*. This 176-page clothbound book has 80 black and white illustrations and covers the Louisiana & Arkansas Railway from its beginning to the modern era. You can now order directly from Mr. Fair. He'll even autograph it for you. Cost directly from him is only \$34. His address is: James R. Fair, 2804 Northwood Rd, Austin, TX 78703-1630. Call 512-451-6194 or 512-471-3689.

RAILROAD ABANDONMENT PROPOSALS

The address of the Surface Transportation Board is: Office of the Secretary, Case Control Unit, 1925 K Street, Washington DC 20423. The STB phone number for abandonment procedures (Office of Public Services) is: 202-565-1592. If you contact them, it would be handy to use the Docket Numbers. Their Web address is: <http://www.stb.dot.gov> if you'd like the complete listings.

These abandonment proposals have been printed in the Federal Register or have come directly from the Surface Transportation Board. They will go in effect unless one of the following occurs: 1) an offer of financial assistance is received; 2) a request for public use of the land is received (for instance, rails-to-trails); 3) petitions to reopen the case is filed. Railroads, before they can file these "notices of exemption under CFR 1152 Subpart F," must certify that 1) no local traffic has moved over the line for at least 2 years; 2) any overhead traffic can be routed over other lines; 3) no formal complaint filed by a user is pending and; 4) environmental reports, historic reports, transmittal letter, newspaper publication, and notice to governmental agencies have been met. Even though approval is granted for the railroads to abandon, it may be months or years before track is actually taken up.

NORTH CAROLINA - RUTHERFORD RAILROAD DEVELOPMENT CORP. & SOUTHEAST SHORTLINES INC (THERMAL BELT RAILWAY) - To abandon 7.87 miles between m.p. SB-180.47 in Spindale and m.p. SB-188.34 near Gilkey, North Carolina. Effective August 26, 2000. (STB Docket No. AB-567, Sub No. 1X, decided July 19, served July 27, 2000)

OREGON - UNION PACIFIC/CENTRAL OREGON PACIFIC RAILROAD - To abandon 1 mile between m.p.

785.50 and m.p. 786.50 at Coquille, Oregon. Decision by October 30. (STB Docket No. AB-33, Sub No. 146x and AB-575, Sub No. 1X, decided August 1, July 24, 2000)

ARKANSAS RAIL NEWS

UP MEMORIAL GOLF TOURNAMENT

This year this golf tournament will be held September 9 at Burns Park in North Little Rock. Proceeds from this fund go to scholarships for the needy. The Union Pacific Employee's Club #54 is in charge of the tournament and would like sponsors for a hole, a team, help with player meals or a prize donation. If interested, contact Richard Baldwin, 303 Pickwicket, Conway AR 72032. The Arkansas Railroad Club has sponsored some of this event in years past.

GENERAL RAIL NEWS

WHITE PASS & YUKON

(*Skagway, Alaska*) - The White Pass & Yukon Railroad celebrated its 100th year of operation with a special train on July 29, 2000 from Skagway to Carcross. This is the only international narrow gauge rail line in North America and hauls 275,000 tourists a year (including yours truly, Ken Ziegenbein, back in June 2000). It was started in 1898 during the Klondike Gold Rush and was completed in 1900. WP&Y's phone number is 907-983-2217.

AMTRAK NEWS

INCREASED BUSINESS

From July 6-9, Amtrak received 265,000 calls, up 11.8% from a year earlier. There was \$17 million in sales, a 24% increase from the year before. Amtrak had its highest June ridership since 1991, carrying more than 2 million passengers. This helped Amtrak record its highest monthly income since the agency was created in 1971 - more than \$100 million.

Long-distance ridership in the third quarter rose 5 percent from 1999. The *Texas Eagle* rose 49 percent in the third quarter, due partly to becoming daily. *Eagle* revenues rose 33 percent in that same quarter. In June, the *Eagle* had a 72 percent increase in ridership from the year before June and a 44 percent increase in revenue.

EXCURSIONS/SHOWS/EVENTS OF OTHER CLUBS

FORT WORTH, TEXAS - September 20-24, 2000 - Joint Texas Burlington-Rock Island Convention - Will include many slide shows featuring Rock Island and Burlington Zephyr subjects, field trips to BNSF, BNSF Executive train excursion round-trip Fort Worth-Dallas-Teague, Texas Zephyr train show. For registration information contact Steve Goen, Joint Texas Convention 2000,

1519 Sweetbriar Dr, Wichita Falls TX 76302-2911, 940-767-4843, or email at charleswoodward@hotmail.com

JACKSONVILLE, ARKANSAS - October, 2000 - Second annual Arkansas Valley Model Railroad Club's Train Show, Jacksonville Community Center, Jacksonville, Arkansas, 10 a.m. to 5 p.m.

Admission is \$3, kids 12 and under free. For table reservations, contact Jerry Fussell, 412 W 51st St, North Little Rock AR 72118, 501-758-2590.

HOT SPRINGS, ARKANSAS - The Hot Springs White River Scenic Railroad is running excursions out of Hot Springs on Wednesdays, Fridays, Saturdays and

Sundays through the winter. They leave from the Hot Springs Transportation Center. Prices are \$19.95 for first class, \$11.95 coach and \$6.75 for children. Call 888-824-1022 for tickets.

WORLDWIDE - Trains Unlimited Tours is again offering rail journeys worldwide (Russia - including a last Trans-Siberian all-steam trip for \$16,000, Africa, Mexico, South America, U.S., Canada, Peru, Alaska, Argentina, Copper Canyon. For a brochure and more information call 800-359-4870 or write Trains Unlimited Tours, PO Box 1997,

Portola CA 96122.

EAST ELY, NEVADA - Nevada Northern Railway Museum will operate many steam and diesel excursions in 2000 starting May 13 and running through September 16. Call them at 775-289-2085.

ARKANSAS TOURIST LINES - **(FLIPPIN, ARKANSAS)** - White River Scenic Railroad will run Flippin-Calico Rock from April 1 to November 30. A dinner train will also be run. Call 870-435-

6000. **(SPRINGDALE-VAN BUREN)** - The Arkansas & Missouri Railroad will run between Springdale and Van Buren and Van Buren to Winslow. Call 800-687-8600. **(EUREKA SPRINGS)** - The Eureka Springs & North Arkansas will run a steam excursion out of Eureka Springs April 1 through October 30 over the former Missouri & North Arkansas right of way. Lunch trains also available. Call 501-253-9623. (From February 17, 2000 *Arkansas Democrat-Gazette*)

10 GOOD NORTH AMERICAN RAIL JOURNEYS - These rail trips were recommended by John Grant, who wrote the book *Great American Rail Journeys* and had an article in the August 4, 2000 *USA Today*. The article was written by Jayne Clark and sent in by Dan Barr.

Anchorage to Fairbanks, Alaska (Alaska Railroad *Denali Star*, 800-544-0552, <http://www.akrr.com>)

Denver to Salt Lake City (Amtrak's *California Zephyr*, 800-872-7245, <http://www.amtrak.com>)

Skagway, Alaska to Lake Bennett, British Columbia (White Pass & Yukon Railroad, 800-343-7373, <http://www.whitepassrailroad.com>)

Various North American Routes (American Orient Express, 888-759-3944, <http://www.americanorientexpress.com>)

Nogales, Arizona to Mexico's Copper Canyon (Sierra Madre Express, 800-666-0346, <http://www.sierramadreexpress.com>)

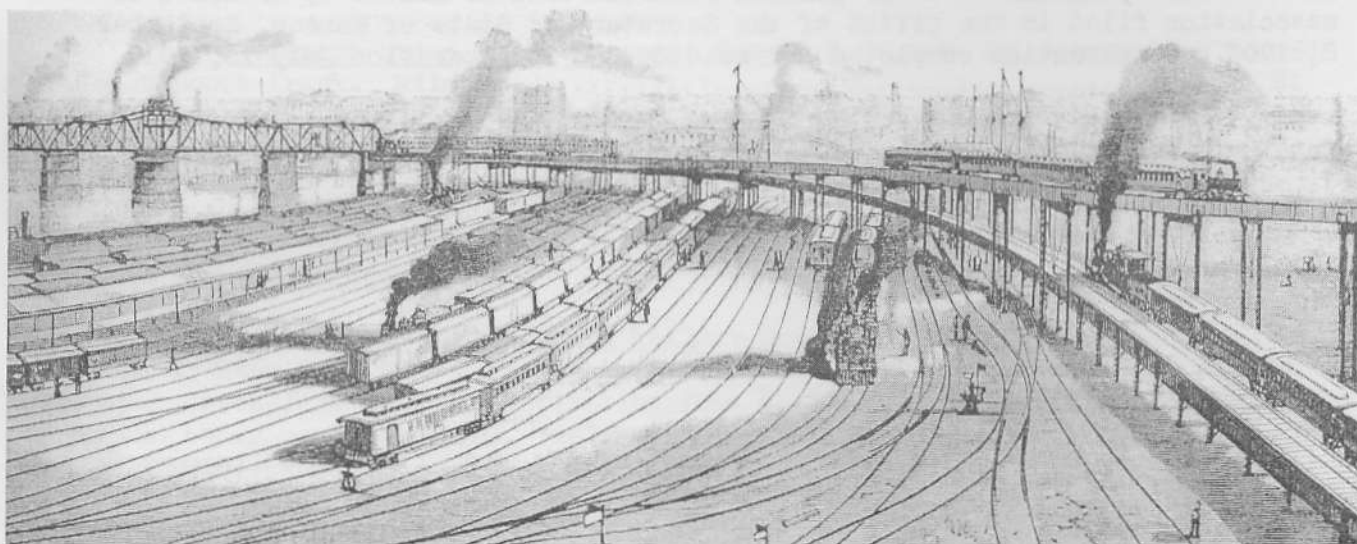
Napa to St. Helen, California (Napa Valley Wine Train, 800-427-4124, <http://www.winetrain.com>)

Los Angeles to Santa Barbara, California (Amtrak's *Coast Starlight*, 800-872-7245, <http://www.amtrak.com>)

Jasper, Alberta to Prince Rupert, British Columbia (VIA Rail's *Skeena*, 800-561-3949, <http://www.viarail.com>)

New York to Montreal (Amtrak's *Adirondack*, 800-872-7245, <http://www.amtrak.com>)

Hyannis, Mass to the Cape Code Canal (Cape Code Central Railroad, 888-797-7245, <http://www.capetrain.com>)



MISSOURI PACIFIC LINES - A CORPORATE HISTORY - Part 14 (Gene Hull)

Leased Lines

The Boonville, St. Louis and Southern Railway Company was incorporated under the general railroad laws of Missouri by articles of association filed in the office of the Secretary of State of Missouri, January 11, 1878. The acquisition of all the railroad and property of the Osage Valley and Southern Kansas Railroad Company by this company has been told. On March 22, 1878, the property was leased to the Missouri Pacific Railway Company for five years from January 1, 1878, and on August 1, 1881, this company leased all its railroad and property to The Missouri Pacific Railway Company for a term of thirty years from July 1, 1880, for a consideration of \$25,000 per annum and maintenance and taxes, which lease was ratified by the President of The Missouri Pacific Railway Company in January, 1885. This lease was renewed by a lease dated March 1, 1910, effective July 1, 1910, for ninety-nine years, same consideration. The Missouri Pacific Railway Company has recently come into possession of practically all of the capital stock of the B. St. L. & S. Ry. Co., but continues to operate the property under the last mentioned lease.

2. The Kiowa, Hardtner and Pacific Railroad Company:

Entire line, from Kiowa to Hardtner, Kansas, leased December 2, 1909, expiration June 30, 1930, consideration 5% per annum on actual cost of road.

Mileage 9.52

Termini: From connection with Missouri Pacific main line at Kiowa to end of track at Hardtner, ~~indicated on map by black double lines No. 67.~~

History

Incorporated under the general railroad laws of Kansas by articles of association filed in the office of the Secretary of State of Kansas, September 2, 1908. Construction completed and road opened for operation July 15, 1910.

Total mileage leased 53.47

XVII. TRACKAGE RIGHTS OVER LINES OF OTHER RAILROADS

1. St. Joseph Branch:

(a) Atchison Union Depot Company, from end of Missouri Pacific track at Atchison to connection with A. & E. Bridge Company's track. Agreement dated July 1, 1879, expiration fifty years from date of completion of depot, consideration 10% per annum of total cost and proportion of maintenance and taxes. ~~Indicated on accompanying map by double broken lines crosshatched, No. (I).~~ Mileage, 0.13

(b) Atchison and Eastern Bridge Company, from Union Depot track connection at Atchison to C.R.I. & P. Ry. connection at Winthrop, Missouri. No written agreement. Credit allowed on tariff basis. ~~Indicated on accompanying map by double broken lines, No. (I).~~ Mileage 0.30

(c) Chicago, Rock Island and Pacific Railway Company, from A. & E. B. Co. connection at Winthrop to St. Joseph and Central Branch Railway connection at Donovan (16.67 miles), and from C.R.I. & P. connection to Union Depot connection at St. Joseph, Mo. (0.07 mile). Total mileage 16.74 Agreement dated February 16, 1907, expires February 15, 1917. Consideration 2% per annum on agreed valuation and proportion of operating expenses on wheelage basis. ~~Indicated on accompanying map by double broken lines crosshatched, Nos. (I) and (I).~~

(d) Union Terminal Railway Company, from C.R.I. & P. connection at Donovan to C.R.I. & P. connection at St. Joseph (3.40 miles), and from Union Terminal Railway connection to St. Joseph and Central Branch Railway connection (0.27 mile). Total mileage 3.67 Agreement dated February 16, 1907, expiration on sixty days' written notice. Consideration \$1383.35 per month and proportion of operating expenses on wheelage basis. ~~Indicated on accompanying map by double broken lines, No. (II).~~

(e) St. Joseph Union Depot Company, from C.R.I. & P. Ry. connection to end of Union Depot track. Mileage 0.21 Agreement dated September 2, 1880, expiration fifty years from date of completion of depot. Consideration 10% interest per annum on total cost and proportion of maintenance and taxes. ~~Indicated on accompanying map by double broken lines, No. (II).~~

2. Cole Junction to Rock Creek:

Atchison, Topeka and Santa Fe Railway Company, from A.T. & S.F. right of way line at Eton to A.T. & S.F. right of way line at Congo. Mileage 7.82 Agreement dated June 3, 1902, expiration June 2, 2001. Consideration \$7200 per annum and other considerations. ~~Indicated on accompanying map by double broken lines, No. (B).~~

3. Soldier's Home Spur:

Atchison, Topeka and Santa Fe Railway Company, from connection at Soldier's Home station to end of track at Soldier's Home. Mileage 0.79 Agreement dated February 16, 1891, expiration on three months' written notice.

ARKANSAS RAILROADER

Trackage Rights

Consideration 6% per annum on one-half of the total cost. ~~Indicated on map by double broken lines; No. (F).~~

4. Kansas City to Virginia:

St. Joseph and Grand Island Railroad Company, from a point 20 feet east of west line of Buffalo Street on K.C.N.W. connection at Seneca to Axtell Junction at Axtell. Mileage 10.77
Agreement dated March 1, 1899, expires March 1, 1924. Consideration \$4000 per annum and proportion of operating expenses on wheelage basis. ~~Indicated on accompanying map by double broken lines; No. (G).~~

5. Pleasant Hill to Hardtner:

Kansas City, Clinton and Springfield Railway Company, from K.C.C. & S. Junction to Missouri Pacific right of way line at Pleasant Hill. Mileage .. 0.54
Agreement dated July 1, 1892, expires July 1, 1917. Consideration 3% of agreed valuation and one-half taxes and all of maintenance. ~~Indicated on accompanying map by double broken lines; No. (C).~~

6. Leeds Branch:

(a) Chicago, Rock Island and Pacific Railway Company, from H.B. C.R.I. & P. connection (on C.R.I. & P. Ry.) at Pleasant Hill to connection with St.L. & S.F. R.R. at Leeds Junction. Mileage 24.87
Agreement dated February 7, 1909, expiration on one year's written notice. Consideration 50 cents per train mile, with a minimum of \$25,000 per annum, and actual cost of additional expense necessitated. ~~Indicated on accompanying map by double broken lines; No. (D).~~

(b) St. Louis and San Francisco Railroad Company, from St.L. & S.F. connection with Rock Island at Leeds Jct. to Missouri Pacific connection 0.27 mile south of Centropolis. Mileage 1.27
Agreement dated February 12, 1909, expiration on one year's written notice. Consideration 75 cents per train, minimum six trains per day. ~~Indicated on accompanying map by double broken lines crosshatched; No. (E).~~

7. Atchison Terminals:

Chicago, Burlington and Quincy Railroad Company, from Missouri Pacific connection to Union Depot connection. Mileage 0.17
Agreement dated May 15, 1903, expiration December 31, 1927. Consideration 15 cents per engine or car. ~~Indicated on accompanying map by double broken lines; No. (H).~~

ST. LOUIS SOUTHWESTERN RAILWAY LINES
 BERRYMAN HENWOOD, TRUSTEE
 EMPLOYEE'S TRIP PASS
 COMPANY BUSINESS—SUBJECT TO CONDITIONS ON BACK No. E 61457

PASS P. B. Wooldridge -----

ACCOUNT Telegrapher -----

FROM Pine Bluff, Ark. TO Camden, Ark. AND RETURN

DATE ISSUED May 15th 1937 GOOD FOR ONE TRIP ONLY UNTIL June 30th 1937

ADDRESS Pine Bluff, Ark. REQUESTED BY W. V. Kolth

MADE WHEN COUNTERSIGNED BY [Signature] REQUESTED BY [Signature]

COUNTERSIGNED BY [Signature] REQUESTED BY [Signature]

CONDUCTORS WILL HONOR PASS BELOW IN ROTATION AS HONORED. FINAL CONDUCTOR WILL CANCEL EACH TRIP WHEN HONORED TO DESTINATION. CONDUCTOR HONORING PASS TO FINAL DESTINATION WILL TAKE UP.

GOING TRIP					RETURN TRIP				
0	0	0	0	0	0	0	0	0	0
1	2	3	4	CANCEL	1	2	3	4	CANCEL

My first pass, issued May 15, 1937. Rode No 5 from Pine Bluff, Ark to Camden, Ark. Unfortunately somewhere between, it fell into a spittoon, but I wiped it off and kept it.

REMEMBERING

by: P. B. Wooldridge

In high spirits, on May 15, 1937, having passed the Rules and Regulations examination at Pine Bluff Shops, I entrained on No. 5 and rode out of Pine Bluff, Arkansas on my first pass, having hired out as a telegrapher. The pass, which I hold today, was originally green, but somewhere between Pine Bluff and Camden it fell into a spittoon, and today is half brown from tobacco juice.

Several days later I was sent to my first railroad job, third trick at Bearden, Arkansas. I'd waited two years for a railroad job, but I had a morbid fear of that first night on duty. There's all the difference in the world loafing around a depot, learning all you can by looking over the operator's shoulder, and sitting in the hot-

Arkansas Railroader

seat yourself, with a train approaching at 60 mph, and the Dispatcher saying: "Copy 5 North, and don't stop him."


But I was very lucky. My angel came in the form of the third trick operator, Homer Ingram, who took off three days and gave me my first opportunity. He stayed with me that first night, looking over MY shoulder, for 8 long hours. Without him I might not have lasted for 44 years. And at the time he was a perfect stranger.

Now a little about Ingram. I understand originally he was a farm boy from Buena Vista, Arkansas. During the Great Depression he had been cut off the extra board, and had operated a hamburger stand. He told me about the time he had received a letter from Pine Bluff about delaying a hot freight train. Bearden was on a straight away and a racetrack for thru freights. Southbound they were descending from Little Bay hill and northbound they were making a run for it. So Ingram would hide behind the end of the depot until the engineers would reduce speed, and then emerge from hiding, dashing out with orders ready to deliver.

One northbound engineer stopped and took water because of the act, and Ingram was instructed to cease and desist.

With Ingram's help I did well that first night, and at the end felt like a veteran. During the night the Dispatcher, W. W. Cook, made the statement to another operator, which I overheard: "That new kid at Bearden is a pistol." He never knew, or course, that I had assistance.

I could understand Ingram's reluctance to deliver orders to fast freights. It was no fun standing less than 3 feet from a train moving 60-70 mph while delivering train orders clipped to a cane hoop.

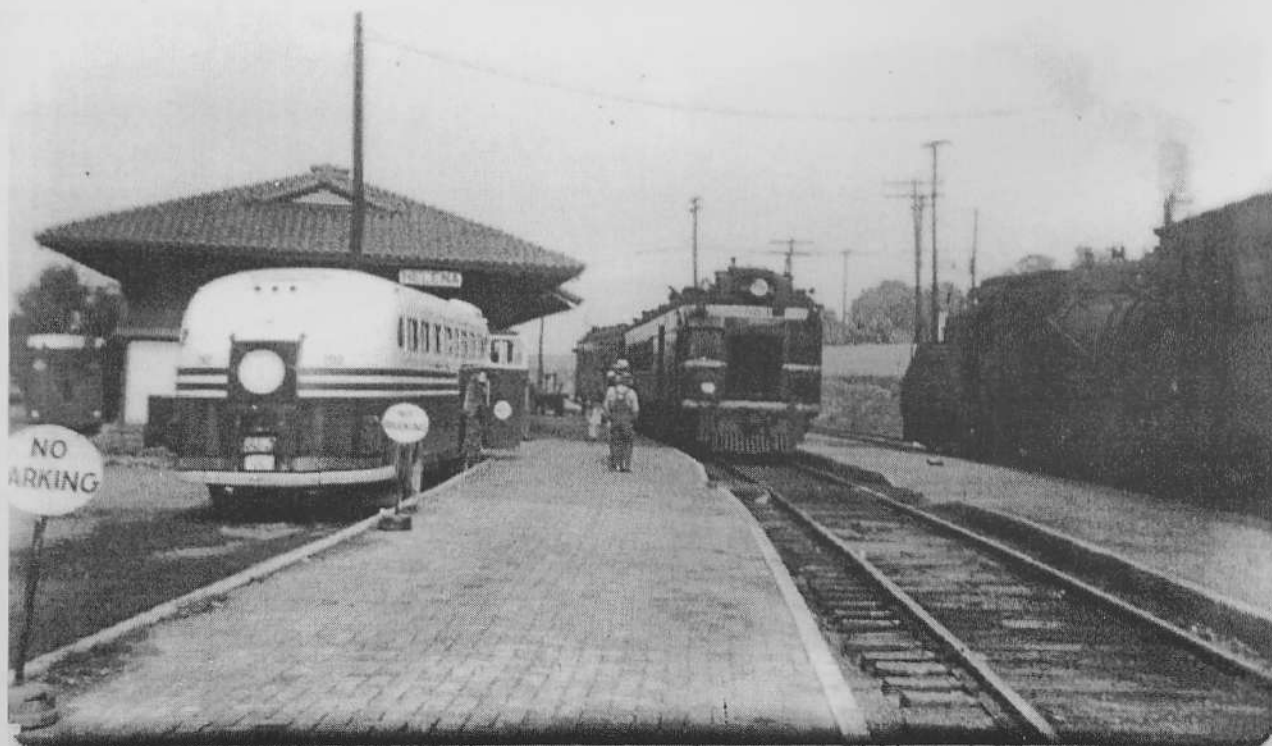
In that connection, I had a friend who was about to deliver orders to the caboos of a southbound Missouri Pacific freight one night at Piggott, Arkansas, when the door of an empty refrigerator car swung out and sideswiped him. He was so unnerved that he fell to his knees and delivered orders to the caboos in that position. He had trouble regaining his composure once back in the office, realizing that he had nearly met his Maker. 



TOP - Ringling Bros. Blue Unit circus train southbound through Pine Bluff, Arkansas, June 13, 2000. The Red Unit was in Little Rock about the same time. **BOTTOM** - Little Rock & Western coming to Little Rock in front of Union Station, July 3, 2000 with engines ETRY 7736 and LRW 103. (*John Jones photos*)



Engine #6606, 4-6-2 Pacific coal burner has a long consist as train #7, *The Southerner*, tackles the hill in Little Rock in 1945. The east-northbound "Meat" train on the next track will proceed on to North Little Rock where the "reefers" will be iced before this hotshot heads on north toward Dupu, Illinois, after #7 clears the HH tower interlocking. (John A. Mills photo)



Missouri Pacific's Rail Diesel Car in Helena, Arkansas, 1949. This little train only went between Memphis and Helena and usually passed the *Delta Eagle* on a siding north of Helena. (Randy Tardy photo)